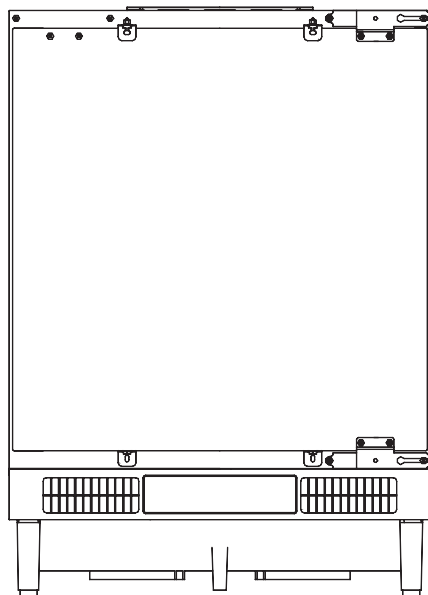


# **Baumatic**

**BRUL 135**

Refrigerator



## CONTENTS

<b>SAFETY INFORMATION</b>	3
<b>SCRAPPING OLD APPLIANCES</b>	7
<b>Energy Saving</b>	7
<b>INSTALLATION</b>	8
Positioning	8
Cleaning the interior prior to use	9
Installation instructions	9
<b>OPERATION AND FUNCTIONS</b>	14
Changing the light bulb	15
Noises during Operation	15
Positioning inner door trays	15
Storing frozen food/freezing fresh food	16
<b>IMPORTANT</b>	16
Refrigerator lamp	16
Periods of disuse	16
Troubleshooting	17

Thank you for purchasing this product.

Before using your refrigerator, please carefully read this instruction manual in order to maximize its performance. Store all documentation for subsequent use or for other owners. This product is intended solely for household use or similar applications such as:

- the kitchen area for personnel in shops, offices and other working environments
- on farms, by clientele of hotels, motels and other environments of a residential type
- at bed and breakfasts (B & B)
- for catering services and similar applications not for retail sale.

This appliance must be used only for purposes of storage of food, any other use is considered dangerous and the manufacturer will not be responsible for any omissions. Also, it is recommended that you take note of the warranty conditions.

## **SAFETY INFORMATION**

**The refrigerator contains a refrigerant gas (R600a: isobutane) and insulating gas (cyclopentane), with high compatibility with the environment, that are, however, inflammable.**

**We recommend that you follow the following regulations so as to avoid situations dangerous to you:**

**Before performing any operation, unplug the power cord from the power socket.**

- The refrigeration system positioned behind and inside the Wine Coolers contains refrigerant. Therefore, avoid damaging the tubes.**
- If in the refrigeration system a leak is noted, do not touch the wall outlet and do not use open flames. Open the window and let air into the room. Then call a service centre to ask for repair.**
- Do not scrape with a knife or sharp object to remove frost or ice that occurs. With these, the refrigerant circuit can be damaged, the spill from which can cause a fire or damage your eyes.**
- Do not install the appliance in humid, oily or dusty places, nor expose it to direct sunlight and to water.**

- **Do not install the appliance near heaters or inflammable materials.**
- **Do not use extension cords or adapters.**
- **Do not excessively pull or fold the power cord or touch the plug with wet hands.**
- **Do not damage the plug and/or the power cord; this could cause electrical shocks or fires.**
- **It is recommended to keep the plug clean, any excessive dust residues on the plug can be the cause fire.**
- **Do not use mechanical devices or other equipment to hasten the defrosting process.**
- **Absolutely avoid the use of open flame or electrical equipment, such as heaters, steam cleaners, candles, oil lamps and the like in order to speed up the defrosting phase.**
- **Do not use or store inflammable sprays, such as spray paint, near the Wine Coolers. It could cause an explosion or fire.**
- **Do not use electrical appliances inside the food storage compartments, unless they are of the type recommended by the manufacturer.**
- **Do not place or store inflammable and highly volatile materials such as ether, petrol, LPG, propane gas, aerosol spray cans, adhesives, pure alcohol, etc. These materials may cause an explosion.**
- **Do not store medicine or research materials in the Wine Coolers. When the material that requires a strict control of storage temperatures is to be**

**stored, it is possible that it will deteriorate or an uncontrolled reaction may occur that can cause risks.**

- Maintain the ventilation openings in the appliance enclosure or in the built-in structure, free of obstruction.**
- Do not place objects and/or containers filled with water on the top of the appliance.**
- Do not perform repairs on this Wine Coolers. All interventions must be performed solely by qualified personnel.**
- This appliance can be used by children aged from 8 years and above and by persons with reduced physical, sensory or mental capabilities or with a lack of experience and knowledge; provided that they have been given adequate supervision or instruction concerning how to use the appliance in a safe way and understand the hazards involved.**
- Children should not play with the appliance. Cleaning and user maintenance should not be made by children without supervision**

# SCRAPPING OLD APPLIANCES



This appliance is marked according to the European directive 2012/19/EU on Waste Electrical and Electronic Equipment (WEEE).

WEEE contains both polluting substances (which can cause negative consequences for the environment) and basic components (which can be re-used). It is important to have WEEE subjected to specific treatments, in order to remove and dispose properly all pollutants, and recover and recycle all materials.

Individuals can play an important role in ensuring that WEEE does not become an environmental issue; it is essential to follow some basic rules:

- WEEE should not be treated as household waste;
- WEEE should be handed over to the relevant collection points managed by the municipality or by registered companies. In many countries, for large WEEE, home collection could be present.

In many countries, when you buy a new appliance, the old one may be returned to the retailer who has to collect it free of charge on a one-to-one basis, as long as the equipment is of equivalent type and has the same functions as the supplied equipment.

## Conformity

By placing the **CE** mark on this product, we are confirming compliance to all relevant European safety, health and environmental requirements which are applicable in legislation for this product.

## Energy Saving

For better energy saving we suggest :

Installing the appliance away from heat sources and not exposed to direct sunlight and in a well ventilated room.

Avoid putting hot food into the refrigerator to avoid increasing the internal temperature and therefore causing continuous functioning of the compressor.

Do not excessively stuff foods so as to ensure proper air circulation.

Defrost the appliance in case there is ice to facilitate the transfer of cold.

In case of absence of electrical energy, it is advisable to keep the refrigerator door closed.

Open or keep the doors of the appliance open as little as possible

Avoid adjusting the setting to temperatures too cold.

Remove dust present on the rear of the appliance

# INSTALLATION

## Positioning

Position the appliance away from sources of heat such as stoves, radiators, direct sunlight etc. Maximum performance and safety are guaranteed by maintaining the correct indoor temperature for the class of unit concerned, as specified on the rating plate. This application performs well from N to ST. The appliance may not work properly if it is left for a longer period at a temperature above or below the indicated range.

**IMPORTANT!** -There is a need of good ventilation around the fridge for easy dissipation of heat, high efficiency of refrigeration and low power consumption. For this purpose, sufficient clear space should be available around the fridge. It is advised to keep 75mm space between the back of the fridge and the wall, at least 100mm of space at its two sides, height of over 100mm from its top and a clear space upfront to allow the doors to open 160.

Climate class	Ambient temperature
SN	+10°C to +32°C
N	+16°C to +32°C
ST	+16°C to +38°C
T	+16°C to +43°C

Appliances must not be exposed to rain. Sufficient air must be allowed to circulate in the lower rear section of appliances, as poor air circulation can affect performance. Built-in appliances should be positioned away from heat sources such as heaters and direct sunlight.



## Electrical connection

Before connecting the appliance to the power supply, ensure that the voltage and frequency as indicated on the data plate correspond to those of the electrical mains.

A deviation of  $-6V$  to  $+6V$  is admissible with respect to the rated voltage. For operation with other voltage supplies, a right autotransformer is required.

Always connect the appliance to an useful earthing system.

For the above,if the main supply is not earthed,connect the appliance to a separate earthing system. Consult a specialized technician to carry out the latter in compliance with current standards.

The manufacturer declines all responsibility for failure to observe the above accident prevention standards.

## Cleaning the interior prior to use

Prior to use, clean all internal parts with warm water and neutral detergent to remove the “new” odor and dry thoroughly. Never use abrasive detergents and/or powders that can damage the appliance.

## Installation instructions:

Before installing, carefully read the instruction in order to avoid a certain number of problems.

Fig 2 -Dimensions of mounting slot

Fig 3 -Height regulation

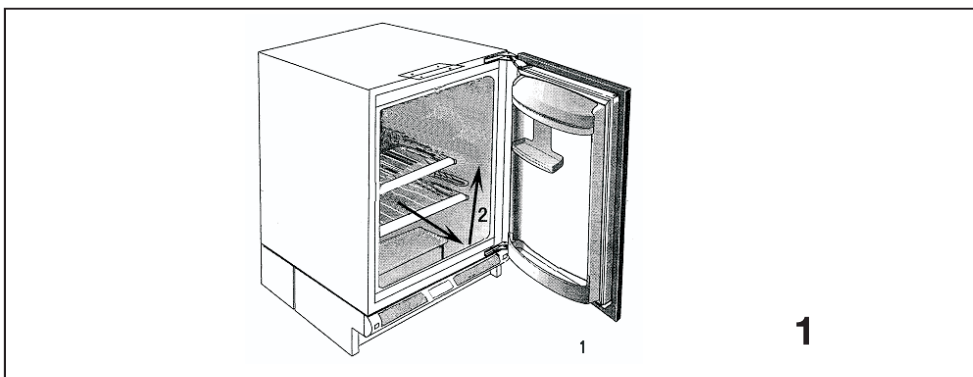
Fig 4 -Installation of the appliance under the worktop

Fig 5 -Fastening the appliance under the worktop

Fig 6 -Door exchange

Fig 7, Fig 8 –Mounting the kitchen cabinet door

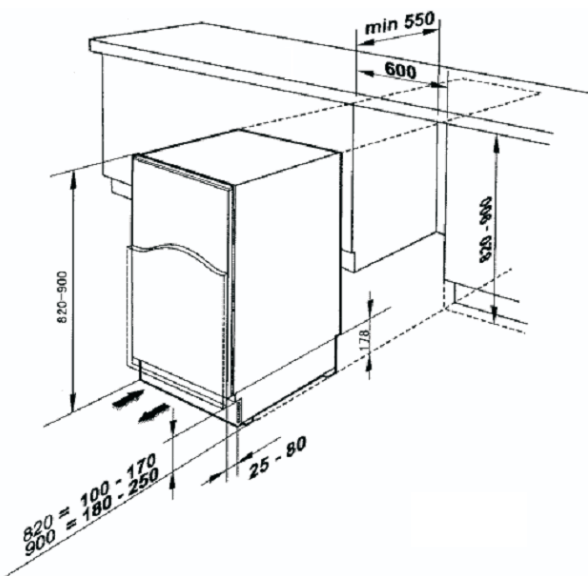
## How to remove the shelf from the appliance



The shelf may be placed randomly upon any of the guide slots inside the appliance. It is protected against sliding out. In case you want to adjust the shelves or remove the shelves from the appliance (Fig 1).

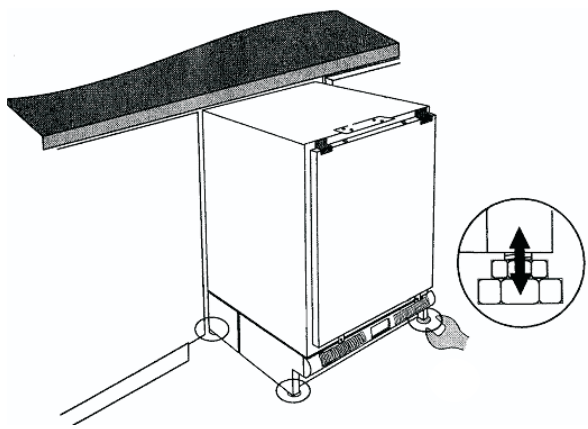
- Lift the shelf by hand and pull it towards you until it reaches the crack in the guide slot.
- Lift the shelf up and pull it out inclined between the door and appliance.
- Reinsertion is carried out in the opposite procedure.

**Fig2-Dimensions of mounting slot**



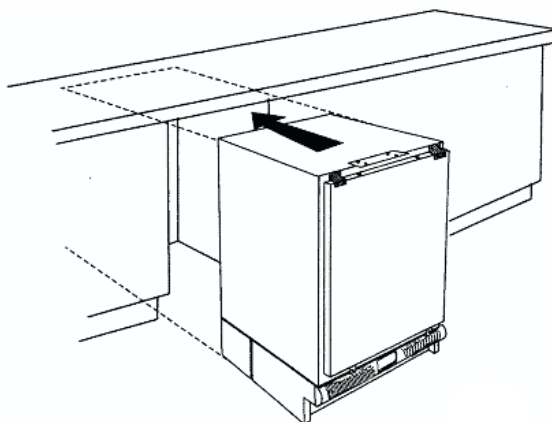
**2**

**Fig 3 -Height regulation**



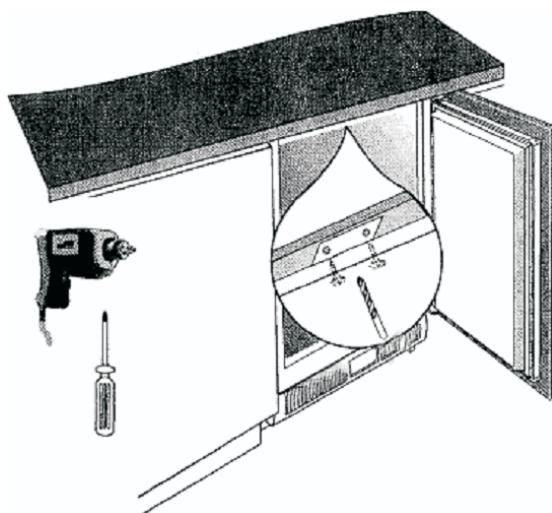
**3**

**Fig 4 -Installation of the appliance under the worktop**



**4**

**Fig 5 -Fastening the appliance under the worktop**



**5**

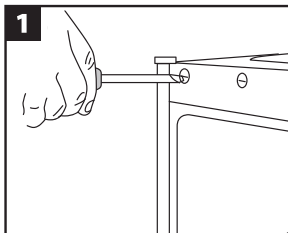
## Fig 6 -Door exchange

- This must be done before fitting the cabinet outer door.
- Ensure the fridge is unplugged and empty.
- We recommend you have someone to assist you.

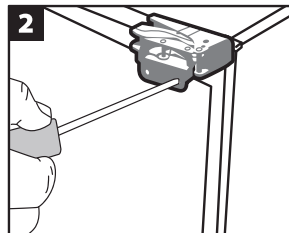
### Tools required

- Phillips style screwdriver.
- Flat bladed screwdriver.

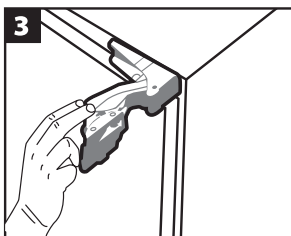
**WARNING!** Take care when opening the hinges, they are sprung and there is a risk of injury if they close on your hand.



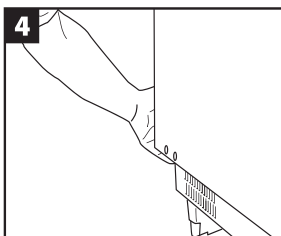
Remove the blanking plates from the outside of the Larder fridge door.



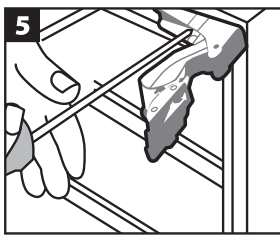
With the door closed remove the screws on the outside of the hinges. Start with the top hinge.



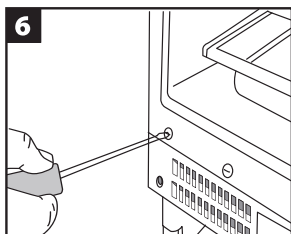
Open the hinges away from the door.



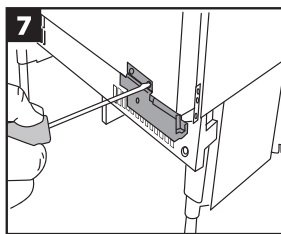
Supporting the bottom of the door as you do so. Be careful with the hinges. Remove the door.



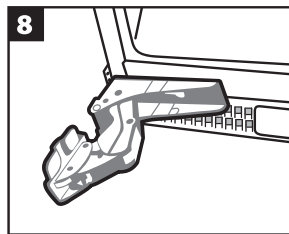
With the top hinge open undo the screws holding it to the cabinet. Be careful with the hinge, use a long shafted screwdriver if you have one.



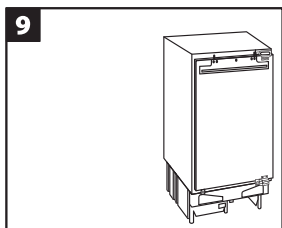
Remove the blanking plates for the cabinet.



Turn the hinge over and place it on the diagonally opposite corner of the cabinet. Screw back in place.

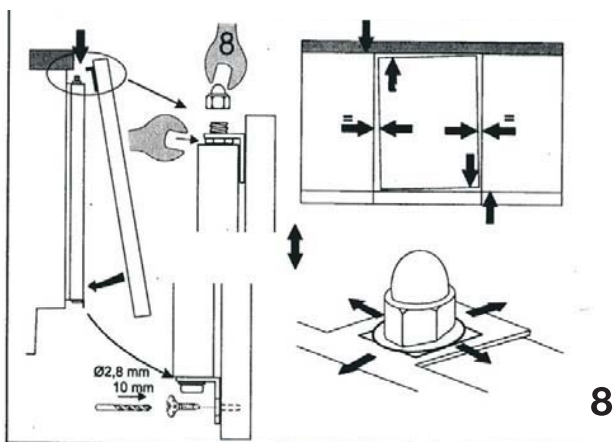
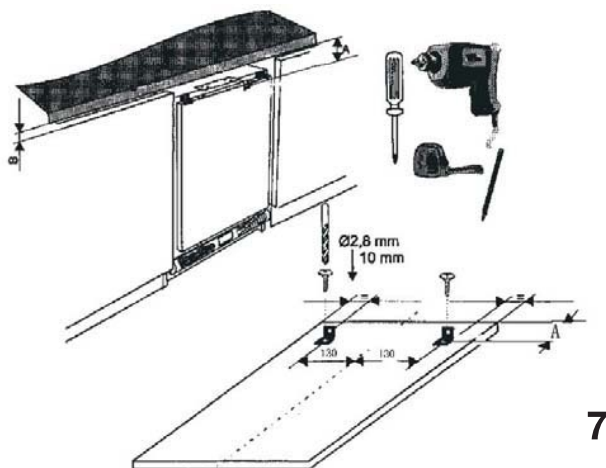


Repeat with the other hinge, replace the cabinet blanking plates. Replace the door and re-attach the hinges.



Check that the larder fridge door is aligned horizontally and vertically and that the door seals are secure on all sides before finally tightening the hinge bracket screws.

Fig 7, Fig 8 –Mounting the kitchen cabinet door



## OPERATION AND FUNCTIONS

To switch on the appliance, turn the thermostat knob clockwise from “●”(stop)to the required cooling temperature:

- Lower number=less cool
- Higher number=cooler

Freezers can be fitted with indicator light as follows: orange light for continuous functioning, green light for normal functioning,red alarm light when the temperature is too high.The internal appliance temperature is maintained constant automatically.An intermediate thermostat setting is generally recommended.

- At higher thermostat settings with higher ambient temperature and a large amount of stored food,operation may be continuous with the formation of frost or ice on the cooler walls.
- In this cases, position the thermostat knob at a lower setting on some models

### **Setting “0” means:Off.**

Turning clockwise in direction Refrigerating unit on, the latter then operating automatically.

### **Setting “1” means:Highest temperature, warmest setting.**

### **Setting “7” (end-stop) means:Lowest temperature,coldest setting.**

### **Important!**

Normally we advise you select setting of 2 or 3 or 4, if you want the temperature warmer or colder please turn the knob to lower or higher setting accordingly.When you turn the knob to lower which can lead to the more energy efficiency. Otherwise, it would result the energy-consuming.

### **Important!**

High ambient temperatures (e.g. on hot summer days) and a cold setting on the temperature regulator (position 6 to 7) can cause the compressor to run continuously or even non-stop.

Reason:when the ambient temperature is high,the compressor must run continuously to maintain the low temperature in the appliance.



# Changing the light bulb

## Warning!

### When there is a LED lamp, please note:

This LED lamp has a longlife time. Once it is broken, it is mandatory to call aftersales center to get a new one.

A replacement made by unqualified people without supervision from electrical engineer would result in electrical shock and injury.

Put the refrigerator back into operation.

## Noises during operation

The following noises are characteristic of refrigeration appliances:

### Clicks

Whenever the compressor switches on or off, a click can be heard.

### Humming

As soon as the compressor is in operation, you can hear it humming.

### Bubbling

When refrigerant flows into thin tubes, you can hear bubbling or splashing noises.

### Splashing

Even after the compressor has been switched off, this noise can be heard for a short time.

## Storing food and drink

For optimal use of the refrigerator compartment observe the following instructions:

Never put hot liquid or food in the refrigerator while evaporating;

Cover or wrap food prior to storage (food containing spices in particular);

Arrange food so that air can circulate freely inside the compartment.

Meat (all types): wrap in protective material and store up to 1-2days maximum.

Cooked food and cold meals etc must be covered well and stored in any position in the refrigerator.

Fruit and vegetables should be cleaned and stored in the relative drawer.

Bananas, potatoes, onions and garlic should be stored in the refrigerator unless rewrapped.

## Food shelves

The walls of the cold storage area are equipped with guides to enable insertion of the grids or shelves in various positions as required.


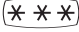
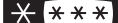
## Positioning inner door trays

Inner door trays can be inserted in various positions. To change the position proceed as follows:

Pull the tray up out of its seat and refit in the new position.

The upper tray can be removed to ensure thorough cleaning when required.

## Storing frozen food/freezing fresh food

Appliances with compartments with the  symbol can be used to store frozen food for a maximum time of one month. Appliances with the  symbol are suitable for storing frozen food but not for freezing fresh food, while appliance with  symbol are suitable for both uses.

- Appliances with compartments that have no symbol are unsuitable for freezing fresh foods and for storing frozen food

## IMPORTANT

**IMPORTANT!** – in order to make the most of the volume of the fresh food compartment and frozen-food storage compartment, the user can remove shelves, drawers, out of the appliance, according to your daily use.

## Defrosting :Why defrosting

Water contained in food and water in the air will get into the fridge when the door is opened. And the water will form frost inside the refrigerator. It will weaken the refrigeration when the frost is thick. While it is more than 10mm thick, you should defrost.

## Defrosting in fresh food storage compartment

It is automatically controlled by switching the temperature regulator on or off so that there is no need of operation of defrosting. Water from defrosting will be drained into a drip tray through a drain pipe at the back of the fridge automatically.

## Warning!

Switching off the appliance.

To switch off the appliance, turn the temperature regulator to position "0".

## Refrigerator lamp

The central section of the thermostat box is fitted with a lamp for internal lighting. If replacement is required, disconnect the appliance from the power supply, remove the protection grille from the thermostat unit and unscrew the lamp. Replace with a version with the same voltage, refit the grille on the thermostat unit and connect up to the power supply.

## Periods of disuse

In the event of prolonged periods of disuse, clean thoroughly after emptying, disconnect the appliance from the power supply and leave the door ajar to avoid the formation of unpleasant odors.



## Troubleshooting

Defective operation of the appliance is not always due to a technical fault but is often caused by incorrect installation or use. To avoid unnecessary technical assistance and relative expenses we recommend the following procedures.

Symptom	What to do
Appliance operation failure	Check that the power supply is not disconnected
	Check the thermostat is not set to "0 ";
	Check that the plug is inserted correctly into the mains socket;
	Check that automatic cut-out on the mains line has not tripped or that a fuse has blown;
	Check that the power cable is not faulty.
Internal temperature is not sufficiently cool	Check that the door close properly;
	Check that air can circulate freely;
	Check the thermostat setting is correct;
	Check the refrigerator is not positioned close to the heat sources;
	Check the condenser is clean;
Internal temperature is too low	Check that the thermostat setting is correct.
The compressor runs continuously	Adjust the thermostat to give correct temperature control.
	Check that the door is closed.
	Large quantities of food have recently been placed in the cabinet / and or door is frequently opened.
	Check that air ventilation is not obstructed.
Internal lamp does not work	Check that the appliance is switched on. Otherwise disconnect the plug from the mains socket, remove the projection grille from the thermostat unit and check that the light is tightened correctly. Replace any defective light bulbs with a new 1.5W bulb that has the same voltage as that indicated on the data plate inside the unit.

If after the above checks there is still a fault call your local service center.

In-guarantee customer should ensure that the above checks have been made as the engineer will make a charge if the fault is not a mechanical or electrical breakdown.



## **UK Customer Care Telephone**

0844 692 3605

## **UK Spare Part Telephone**

0844 692 3606

# Baumatic

---

---

Candy Hoover Group Srl  
Via Comolli 16  
20861 Brugherio (MB)  
ITALY